



## LED-heliport beacon AOL 303SA-H

### technical data

Type	AOL 303SA-H
Lamp	high performance LED white
Supply voltage	- 24V / DC - 230V (100-240V) / AC $\pm 15\%$ electronic ballast installed in obstruction light
Power consumption	max. 200W average 55W
Luminous intensity effective	>2.500 cd white, horizontal 360° meets administrative regulations AVV NFL 1-36/06
Flash rate	1,2s off / 0,125s on 0,1s off / 0,125s on 0,1s off / 0,125s on 0,1s off / 0,125s on
Average service life	> 100.000 hours
Overvoltage protection	integrated
Range of temperature	-40°C to +60°C
Housing	powder-coated aluminum, traffic white, stainless steel V4A available, colors according to RAL table
Optics	optical system
Electrical connection	feed-through terminal block to 2.5mm <sup>2</sup>
Degree of protection	IP 66
Dimensions	240 x 190 mm (24V) 240 x 300 mm (230V)
Weight	approx.. 2,5 kg
Mechanical stress	shock-proof, vibration-resistant
Functions	- dimming (10%,30%,100%) optional - fault indication potential free
Quality characteristics	- integrated heating system to avoid icing - high-efficient protection of LED luminous element against ultraviolet light - well-proven system since 1994
Accessories	- adapter for mounting

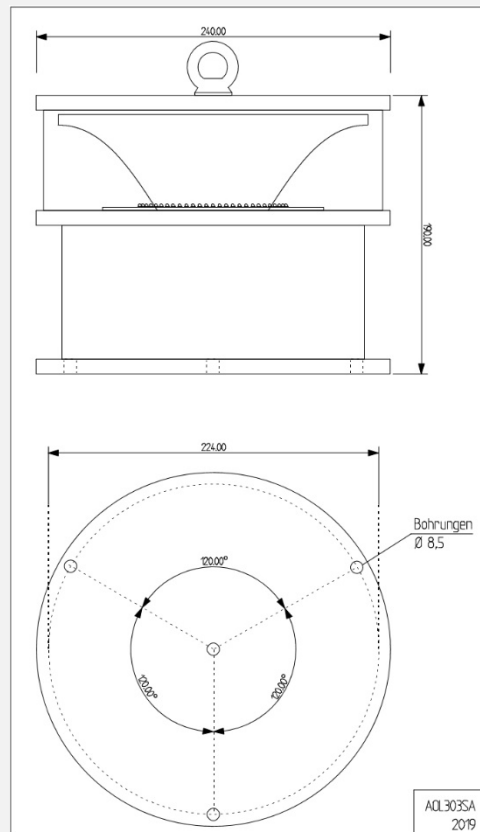
*Notice: The technical equipment influences the design of the obstruction lights. The following overview will help you to choose the correct product. We would be pleased to advise you personally.*



**execution AOL 303SA-B 24V DC**



[fig. similar]



- ☐ with additional infrared LED
- ☐ terminal box synthetic material
- ☐ terminal box aluminium (standard)
- ☐ without terminal box, cable length: \_\_\_\_\_m

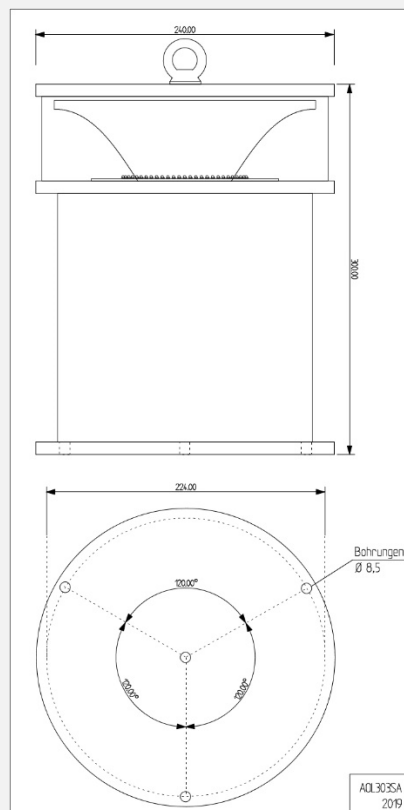
Order volume: \_\_\_\_\_



**execution AOL 303SA-B 230V AC**



[fig. similar]



- ☐ with additional infrared LED
- ☐ terminal box synthetic material
- ☐ terminal box aluminium (standard)
- ☐ without terminal box, cable length: \_\_\_\_\_m

Order volume: \_\_\_\_\_

